

# CNC MILLING MACHINE



## Specifications

MODEL	KM-80D	KM-100D	KM-150D	KM-180D	KM-208S	KM-258S	KM-308S
<b>TABLE</b>							
Table surface	305 x 1270 mm	410 x 1370 mm	450 x 1800 mm	450 x 2100 mm	810 x 2200 mm	810 x 2700 mm	810 x 3200 mm
T-slot(W/H)	18 / 3 T	18 / 3 T	18 / 5 T	18 / 5 T	18 / 5 T	18 / 5 T	18 / 5 T
Table load capacity	400 Kg	600 Kg	1000 Kg	1200 Kg	2200 Kg	2400 Kg	2600 Kg
<b>TRAVELS</b>							
X travel	800 mm	1000 mm	1500 mm	1800 mm	2000 mm	2500 mm	3000 mm
Y travel	500 mm	500 mm	850 mm	650 mm	850 mm	850 mm	850 mm
Z travel	500 mm	500 mm	620 mm	620 mm	710 mm	710 mm	710 mm
Spindle center to column	530 mm	530 mm	670 mm	670 mm	870 mm	870 mm	870 mm
Spindle nose to table	620 mm	620 mm	730 mm	730 mm	830 mm	830 mm	830 mm
<b>SPINDLE</b>							
Taper of spindle nose	BT40 or CAT40						
Spindle speed	6000 rpm						
<b>FEED</b>							
Rapid on X, Y & Z axis	10000 mm / min			15000 mm / min			
<b>MOTOR</b>							
Spindle motor	7.5 Hp	10 Hp	15 Hp	15 Hp	20Hp		
AC servo motor	1 KW	1 KW	1.5 KW	1.5 KW	5 KW		
<b>GENERAL</b>							
Power required	12 KVA	13 KVA	15 KVA	15 KVA	20 KVA	20 KVA	28 KVA
Net weight	2800 kg	2800 kg	4200 kg	4800 kg	9500kg	10200kg	11000kg
Gross weight	3000 kg	3200 kg	4000 kg	4200 kg	10000kg	10700kg	11500kg
Measurement (LxWxH)	2100x2300x2550mm	2100x2300x2550mm	2700x2300x2550mm	2700x2300x2550mm	3200x2300x2550mm	3700x2300x2550mm	4200x2300x2550mm

※ Specifications and design are subject to change without notice.

## Standard Accessories

1. Table splash guard
2. Power draw bar
3. Toolbox & Manuals
4. Frequency inverter
5. Auto lube system
6. Chip Tray
7. Coolant system
8. Halogen lamp
9. Rigid tapping
10. Ethernet

## Optional Accessories

1. Full enclosed splash guard
2. 16 tools armless ATC
3. 24 tools arm ATC
4. Spindle chiller for 8000 (10000) rpm
5. TFT-LCD display
6. Rotary table (4<sup>th</sup> axis)
7. Tilting table (5<sup>th</sup> axis)



CE



ISO 9001



C-TEK TECHNOLOGY CORPORATION

No. 29-3, LLUNG HSING LANE, SEC. 2, FENG HSING RD., TANTZU, TAICHUNG, TAIWAN.  
 TEL: +886-4-26363131  
 FAX: +886-4-26363261  
 E-mail: ctek@ms3.hinet.net  
 http://www.ckte.com.tw



# CNC MILLING MACHINE



C-TEK TECHNOLOGY CORPORATION



## C-Tek CNC Controls...Easy to Use, Efficient to Run!

These CNC Milling Machines are designed especially for Small batch Machining, Mould making, Toolrooms, R & D Workshops and Maintenance facilities. Operation & Program input are greatly simplified through the advanced use of graphics.



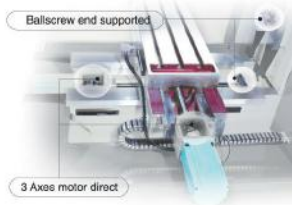
### Features

#### 1. Extremely Rigid Cast Construction:

- The main castings including the bed, column, saddle, and table are constructed from high quality Meehanite castings.
- Extra wide base slideways combined with narrow way of straightness guide ensuring high accuracy.
- Hardened three Axes slideways, heat-treated table surface, precision grounds T-slots.

#### 2. High Precision Feed Device:

- The X, Y and Z axes employ high precision ball screws,
- coupled with a double nut design for precise traversing.
- Precise hand scraped slideways coated with Turcite B anti friction material, which ensures accurate, smooth traversing and high wear resistance.
- Automatic Lubricator provides excellent lubrication to all slideways and parts.
- The accurate counter-balance weight ensures services life of ballscrews and machining accuracy.
- The surface accuracy is precisely inspected by laser calibration.



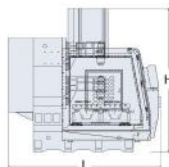
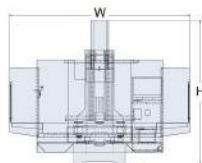
3 Axes motor direct



Optional 24 tools arm type ATC



### DIMENSIONAL DRAWINGS:



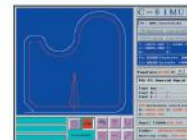
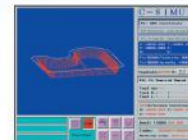
MODEL	L	W	H
KM-80D	2380	2810	2500
KM-100D	2380	3320	2500
KM-150D	2910	4600	2620
KM-180D	2910	5210	2620
KM-2085	2577	6000	2828
KM-2585	2577	7250	2828
KM-3085	2577	8500	2828

unit:mm

• KM-2085

• KM-2085

• KM-3085



### 3. Control Benefits:

- PC Based Conversational Controller means that no previous programming experience is necessary, anyone can learn within a few hours of training with this question and answer format.
- Driven by high torque, low noise, high stability AC Digital servo motors and drives.
- The versatile C-Tak CNC Control offers high capabilities to handle easily many different types of component, from the simple to the most sophisticated of jobs.
- Easy to use software with graphic input programming in basic machinist language, with no complicated G & M codes.
- Powerful help function to assist user to edit complex geometry.
- It allows NC program to start run by any block when a tool breaks.
- No skillful technician required, anyone can easily to learn and master in a few hours.



### CNT-830 Specifications and Function

Simultaneous controllable axis: X, Y, Z, C, B axis  
 Interpolation: Linear for 3D, Circular for 2D  
 Coordinate system: Absolute, incremental, Polar  
 Dwell: 0-9.9 sec for Drilling  
 Least IP dimension: 0.001 mm  
 Max programmable dimension: +/-9999.999 mm  
 Jog feedrate: 1um, 10um, 50um, 100um per pulse  
 Feedrate: 10-8000 mm/min  
 Feedrate override: 10%-150%  
 Backlash compensation: 0-999um  
 Pitch error compensation: +/-50 points  
 Tool compensation: +/-999.999 mm  
 Mirror image: X, Y axis mirror  
 Rotation angle: 0-360 degree  
 2.5D Contour: cut way select, Taper  
 2.5D Pocket: Zig-Zag, Spiral, Taper  
 Linear array Nx, Ny: 1-999  
 Linear array Dx, Dy: +/-999.999 mm  
 KM-2585 2577 7250 2828  
 KM-3085 2577 8500 2828

CPU: Industrial PC based 32-BIT  
 Monitor: 14" CRT or 15" TFT LCD  
 Floppy disk: 3.5" 1.44MB  
 File storage: Harddisk or CF card or DOM  
 Axis motor: Digital AC servo motor for 3 axes  
 Machining interrupt and return  
 Machining time display  
 Program error display  
 Machine alarm display  
 WatchDog alarm display  
 Break point setting  
 Standard G code edit  
 Standard M code edit  
 3D cam transfer interface  
 Network transmit: transfer rate 100MB/Sec.  
 Look ahead: 2000 Block/Sec.  
 Automatic detect acc./dec speed of tiny R corner  
 3D program editing on line  
 With motor parameters adjusting function to control the motor and machine in the best condition  
 P.I.D.F Control Loop